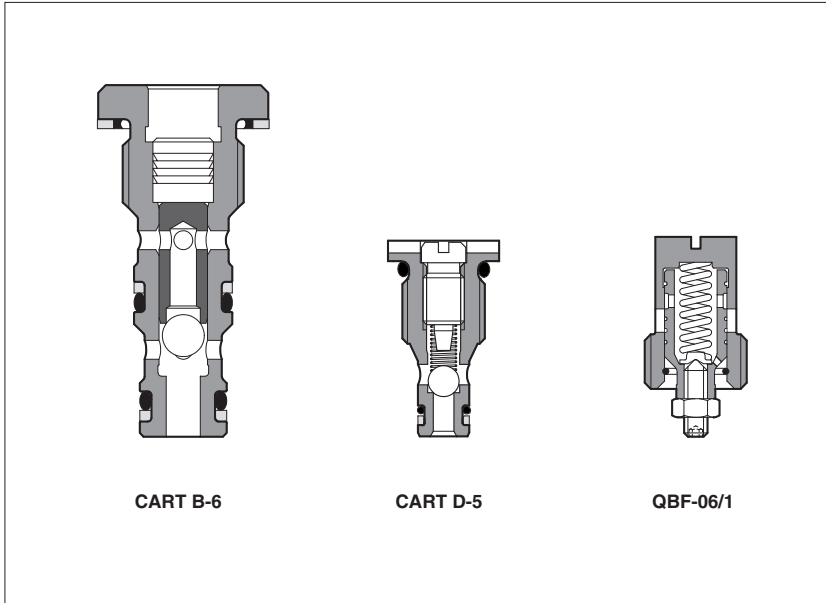


# CART B\*, CART D\*, QBF

Shuttle valves, check valves and flow regulators for piloting lines and load sensing blocks screw-in mounting



Cartridge valves for piloting lines and load sensing blocks

Applications:

**CART-B\*** are shuttle valves which automatically select the piloting line at higher pressure and contemporary shut-off the piloting line at lower pressure. They are used for pilot pressure selection in load sensing blocks or in modular pressure compensators (see KT catalog, table D150)

**CART-D\*** are simple check valves mainly used in load sensing blocks: D-5 model is used together with CART-B\* for check function on LS line among different users.

**QBF-06/1** is a pressure compensated flow control valve, screw-in execution. It is used to provide a constant flow to pilot stages of proportional valves.

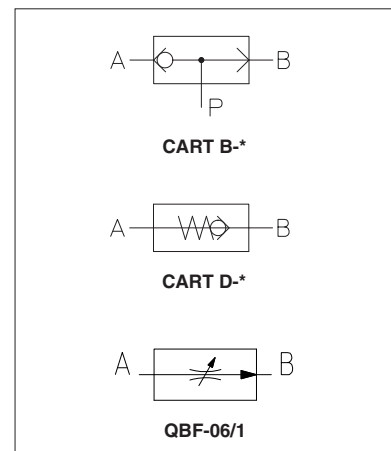
## 1 MODEL CODE of shuttle valves and check valves

<b>CART</b>	<b>B</b>	-	<b>3</b>	<b>/*</b>
Screw-in mounting				Seals material - = NBR PE = FKM
B = Shuttle valve		Size for type B:		
D = Check valve		3 = max flow 6 l/min		
		5 = max flow 5 l/min		Size for type D:
		6 = max flow 15 l/min		5 = max flow 5 l/min

## 2 MODEL CODE of flow regulator

<b>QBF</b>	-	<b>06</b>	/	<b>1</b>	<b>/*</b>
Flow regulator					Seals material - = NBR PE = FKM
Size = G1/4"		Max adjustable flow rate:			
		1 = max flow 1,5 l/min			

## 3 HYDRAULIC SYMBOLS



## 4 HYDRAULIC CHARACTERISTICS

VALVE MODEL	CART B-3	CART B-5	CART B-6	CART D-5	QBF-06/1
Max pressure (bar)			350		
Max flow (l/min)	6	5	15	5	1,5
Regulated flow (l/min)	-	-	-	-	0,75 ÷ 1,5
Min regulated Δp (bar)	-	-	-	-	4

## 5 MAIN CHARACTERISTICS OF SHUTTLE VALVES AND FLOW REGULATORS

Assembly position	Any position
Ambient temperature	-20°C + 70°C
Fluid	Hydraulic oil as per DIN 51524...535; for other fluids see section I
Recommended viscosity	15÷100 mm <sup>2</sup> /s at 40°C (ISO VG 15÷100)
Fluid contamination class	ISO 4401 class 21/19/16 NAS 1638 class 10 (filters at 25 μm value with β <sub>25</sub> ≥ 75 recommended)
Fluid temperature	-20°C +60°C (standard seals) -20°C +80°C (/PE seals)

